

Marketing Bulletin - CerebraLogik (aEEG)



Mennen Medical is proud to announce our latest novel development: **The CerebraLogik.**

The CerebraLogik, is an aEEG monitoring module connected to the UIM input of Mennen Medical's Vitalogik & Menntor monitors.

It is a dual channel differential EEG amplifier that records EEG and aEEG simultaneously. The CerebraLogik module can be attached by a clip to a baby basinet or a patient bed.

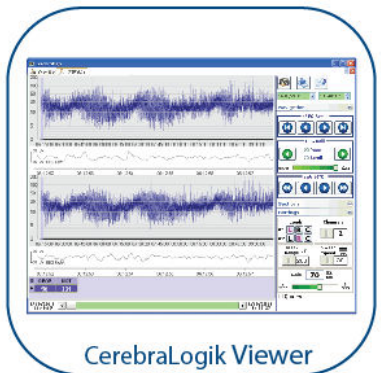
Continuous Electroencephalographic (EEG) monitoring gives direct information on brain function in newborn infants needing intensive care. A trend measure of the EEG, called the amplitude-integrated EEG (aEEG), has proved capable of giving relevant information in newborn infants of differing levels of maturity.

aEEG Monitoring has become a part of the routine neurological care in the neonatal units, especially in full-term infants with Hypoxic-Ischemic-Encephalopathy and in infants suspected of seizures.

The CerebraLogik records real time EEG with a panel of 3 hours aEEG. The EEG and aEEG are monitored, stored and displayed in parallel with the other vital signs on the Vitalogik & Menntor monitors.

The CerebraLogik can also be connected to the Criticool Pro, thus providing the staff a complete "one-stop-shop" workstation for hypothermia treated patients- Monitor Vital signs, EEG and aEEG whilst Regulating Hypothermia.

EEG and aEEG data can be exported from the monitor to a USB key (via the USB connector on the monitor) and transferred to your PC. The CerebraLogik Viewer software on your PC enables downloading a patient's data allowing you to study sections or the complete procedure of your patient. Remote reviewing and storing of aEEG sections or aEEG sessions (up to 7 days) on a PC is easy and feasible with this tool.



CerebraLogik Viewer



CerebraLogik Front



CerebraLogik Back

Note: The CerebraLogik Module requires a Vitalogik SW version 6.1 (or higher) and 16 GB memory.