

THE MOST EFFECTIVE NON-INVASIVE APPROACH

CritiCool - The Optimal Solution for Induced Hypothermia

CritiCool's clever algorithm for Core temperature control offers precise cooling to programmed Set-Point Temperature. Continuous temperature feedback from the patient enables automatic temperature regulation and monitoring. Controlled Rewarming mode assists in preventing complications during this sensitive phase⁶.

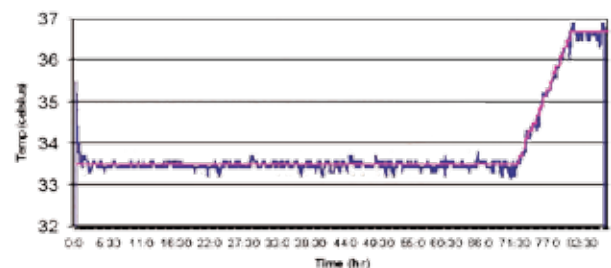
SIMPLE. PRECISE. FAST.

- So Fast** Early initiation of cooling during transport or within minutes of arrival to hospital.
- So Simple**
 - Simple Graphic User Interface
 - Small system, easy for transport
 - One tube only, for a clutter-free treatment zone
 - Staff labor is reduced significantly in Hypothermia Treatment Patients.
 - Quiet action
- So Precise**
 - Precise, Automatic patient temperature control
 - Set Point Temperature reached swiftly
 - Hypothermia Temperature is stable



COOLING, HYPOTHERMIA MAINTENANCE & RE-WARMING

— Core
— Set Point



THERAPEUTIC HYPOTHERMIA HAS NEVER BEEN EASIER

- Set** Set the desired patient temperature
Intuitive and Simple Setting of Patient Temperature
- Wrap** Apply the CureWrap garment
Cure Wrap is applied swiftly on Patient
Facilitates correct patient care
Non-invasive, easy to apply by nurse staff
- Cool** Commence treatment
- Rewarm** Controlled; Automatic;
Gradual return to Normothermia.



Thermoregulation Control Panel

CRITICOOL PRO SYSTEM

AN INTEGRATED TEMPERATURE MANAGEMENT & PATIENT MONITORING SYSTEM

The CritiCool Pro combines all the advantages of CritiCool with Mennen Medical's VitaLogik Patient Monitor

- Vital Sign Display** Fully Configurable Invasive
Vital Sign Monitoring
ECG and HR
Respiration, SpO2, NIBP
Invasive BP
EtCO2 Monitoring (Optional)
12" display with touch screen (optional)
Alarms with Status messages of all VS and Parameters
- Temperature Regulation** All CritiCool Parameters and Modes
- Analysis Displays** Arrhythmias
ST Segment Analysis



1. Circulation November, 2010, Volume 122, S250-S275 and S640-S656.
2. Resuscitation. 2010 Oct;81(10):1219-76 European Resuscitation Council Guidelines for Resuscitation 2010.
4. CJEM 2012; 12 (4) 355-364.
5. Stroke 1998;29:2461-66
6. Curr Treat Options Neurol. 2012 December ; 14(6): 608-619.

CE 0473 FDA Cleared